

# Highlights from THE PINK PANTHER

The Inspector Clouseau Theme, It Had Better Be Tonight,  
The Pink Panther Theme

TIMPANI

By HENRY MANCINI

HARMONIE DE LACHINE

Arranged by JOHN EDMONDSON

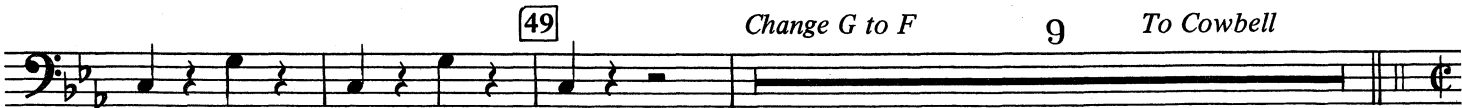
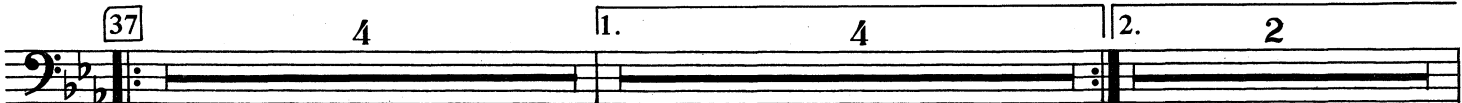
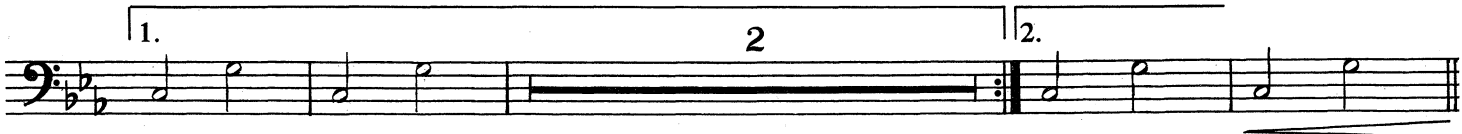
Easy Swing

C, G

16

17 Slower

2



Bright Samba

Soli - Cowbell



212-16010

INSPECTOR CLOUSEAU THEME  
Music by Henry Mancini  
Copyright ©1976, 1979 UNITED ARTISTS  
MUSIC CO., INC. and NORTHRIDGE MUSIC  
INC. All rights administered by  
UNITED ARTISTS MUSIC CO., INC.

IT HAD BETTER BE TONIGHT  
Music by Henry Mancini  
Copyright ©1963 Northridge Music, Inc.,  
c/o Interworld Music Group, Inc.  
6255 Sunset Blvd., Hollywood, CA 90028  
All Rights Reserved International Copyright  
Secured Made in U.S.A.

THE PINK PANTHER  
Music by Henry Mancini  
Copyright ©1964 Northridge Music Inc. &  
United Artists Music Co., Inc.  
International Copyright Secured  
All Rights Reserved Made in U.S.A.

TIMPANI

81

1.

First staff of music, measures 81-88, featuring a rhythmic pattern of quarter notes and rests.

2

Second staff of music, measures 89-93, ending with a double bar line and repeat sign.

2.

Third staff of music, measures 94-100, continuing the rhythmic pattern.

94

2

1.

Solo

Fourth staff of music, measures 94-100, including a solo section with accents.

2.

2

Fifth staff of music, measures 101-107, ending with a double bar line and repeat sign.

cresc.

Easy Swing(same tempo)

♩ = ♩. to Timpani

7

110

8

Sixth staff of music, measures 108-117, in bass clef with a 6/8 time signature.

118

8

126

mf

Seventh staff of music, measures 118-125, in bass clef.

5

134

3

3

f

f

Eighth staff of music, measures 126-133, in bass clef.

mp

dim.

sfz